

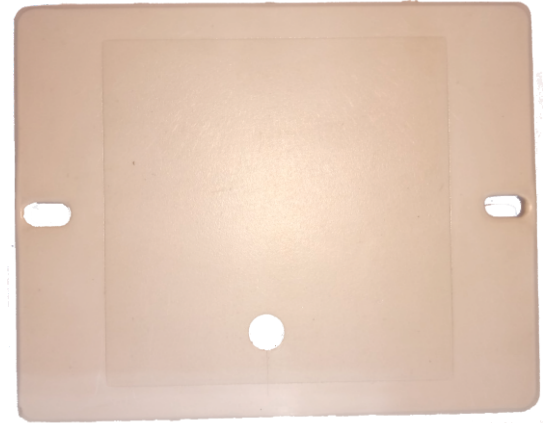
RE-737MZ

Analogue Addressable Zone Interface Module



Product Overview:

Ravel RE - 737MZ zone module permits the addressable FACP to interface and monitor 2-wire conventional smoke detectors, manual call point. It transmits the status (normal, open, short or alarm) of one zone of 2-wire detectors to the FACP. zone module supervises the zone of detectors and the connection of the external power supply. These Modules are addressed by soft addressing method through a programming Tool or through the panel.



Features:

- Inbuilt Isolator.
- Module Status by RED LED.
- Analogue Communication with the panel.
- Soft Addressing using Programming Tool.
- Low Standby Current.

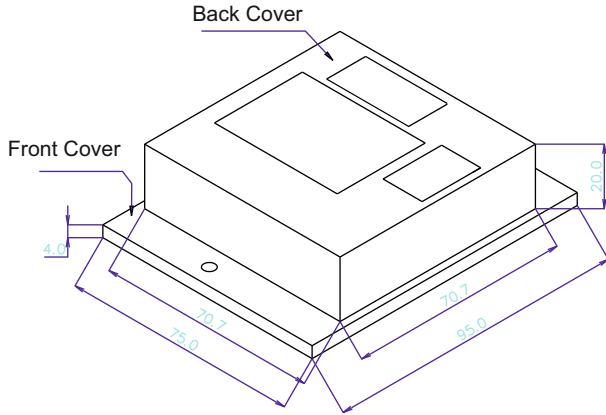
Electrical Specification:

Operating Voltage	:	24 VDC Nominal.
Quiescent Current (SLC)	:	0.5mA
Alarm Current (SLC)	:	2 mA Max.
External Supply Voltage	:	Regulated 24VDC
External Supply Standby Current	:	5mA
External Supply Alarm Current	:	60mA Max.
Communication Line Loop Impedance	:	40 Ohms
End Of Line Resistor	:	4.7K Ohms.
Temperature Range	:	0°C to 49°C / 32°- 120°F
Humidity	:	93 ± 2% RH (non-condensing) at 32 ±2° C / 90 ±3° F.

Mechanical Specification:

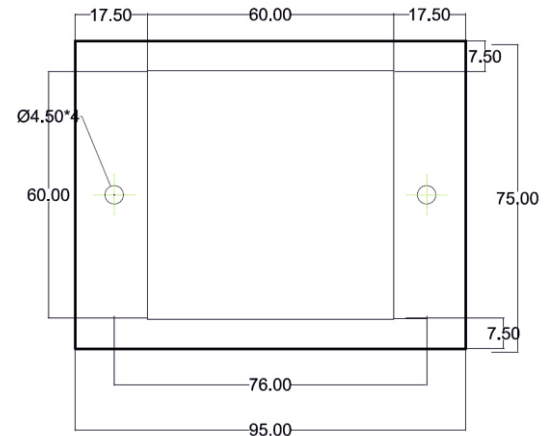
Dimensions	:	(95 W X 75 H X 24D) MM
Color	:	Light Gray
Weight	:	0.5Kg

G.A.Diagram:

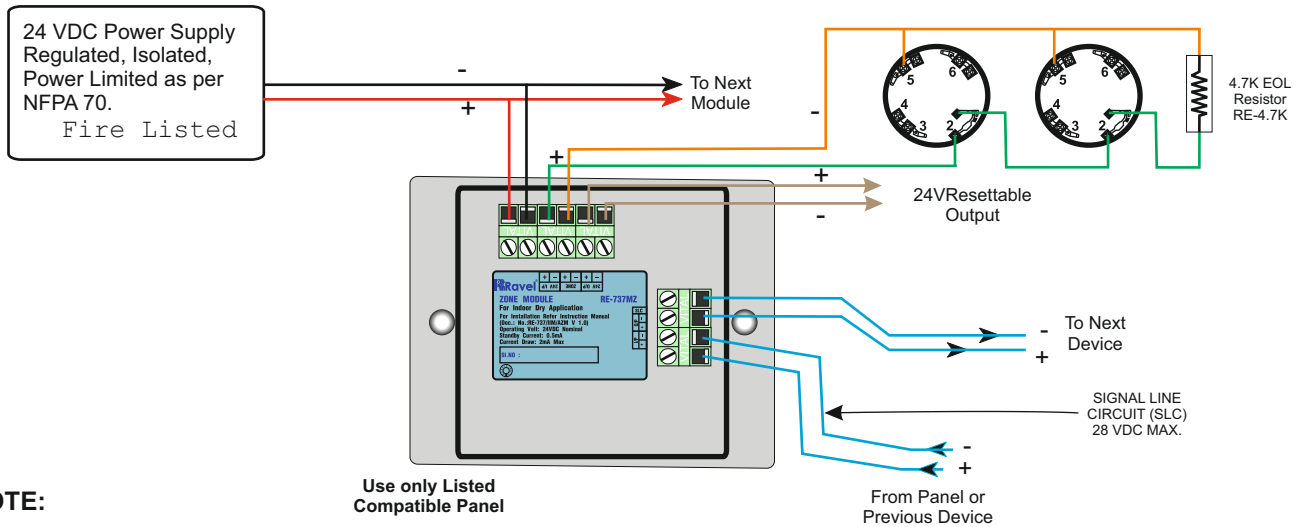


ALL DIMENSIONS ARE IN MM

Mounting Detail:



Wiring Configuration for Conventional Detectors (Class B, Style C)



Compatible Devices:

MODELS	DESCRIPTION
Monitl	Analogue Addressable Fire Alarm Control Panel

Ordering Information:

MODEL	DESCRIPTION
RE-737MZ	Analogue Addressable Zone Module

India:

RAVEL ELECTRONICS PVT LTD.,
(An ISO 9001 Company)
150A, Electronics Industrial Estate, Perungudi, Chennai - 96 .India.
E-Mail: marketing@ravelfire.com; Web : www.ravelfire.com

United Kingdom:

RAVEL ELECTRONICS LTD.,
Unit 11, Chancel Industrial Estate, Newhall street,
Willenhall WV13 1NX, West Midlands, United Kingdom.
E-mail: info@ravelfire.co.uk ;Web: www.ravelfire.co.uk